

TM 11-6720-216-35P

TECHNICAL MANUAL

DIRECT SUPPORT, GENERAL SUPPORT, AND DEPOT MAINTENANCE

REPAIR PARTS AND SPECIAL TOOLS LIST

**CAMERA SET,
STILL PICTURE
KS-19A3**

**HEADQUARTERS, DEPARTMENT OF THE ARMY
SEPTEMBER 1972**

TECHNICAL MANUAL }
No. 11-6720-216-35P }

HEADQUARTERS
DEPARTMENT OF THE ARMY
WASHINGTON, D.C., 26 September 1972

**Direct Support, General Support and Depot Maintenance Repair Parts
and Special Tools List
CAMERA SET, STILL PICTURE
KS-19A3**

Current as of 21 March 1972

	Paragraph	Page
SECTION I . INTRODUCTION		
Scope	1-1	1 - 1
General	1-2	1 - 1
Explanation of columns	1-3	1 - 1
Special information	1-4	1 - 2
Location of repair parts	1-5	1 - 2
Federal supply codes for manufacturers	1-6	1 - 3
Recommendations for maintenance publication improvements	1-7	1 - 3
II. REPAIR PARTS FOR DIRECT SUPPORT, GENERAL SUPPORT, AND DEPOT MAINTENANCE		2 - 1
III. SPECIAL TOOLS, TEST, AND SUPPORT EQUIPMENT FOR DIRECT SUPPORT, GENERAL SUPPORT, AND DEPOT MAINTENANCE		3 - 1
IV. INDEX-FEDERAL STOCK NUMBER AND REFERENCE NUMBER CROSS REFERENCE TO FIGURE AND ITEM NUMBER OR REFERENCE DESIGNATION		4 - 1
V. INDEX-REFERENCE DESIGNATION CROSS REFERENCE TO PAGE NUMBER		5-1

*This manual supersedes TM 11-6720-216-35P, 20 August 1964

SECTION I

INTRODUCTION

1-1. Scope

This manual lists repair parts, special tools, test and support equipment required for the performance of direct support, general support, and depot maintenance of the KS-19A3.

1-2. General

This Repair Parts and Special Tools List is divided into the following sections :

a. Repair Parts for Direct Support, General Support, and Depot Maintenance-Section II. A list of repair parts authorized for the performance of maintenance at the direct support, general support, and depot level.

b. Sped Tools, Test and Support Equipment for Direct Support, General Support and Depot Maintenance-Section III. A list of special tools, test and support equipment authorized for the performance of maintenance at the direct support, general support and depot level.

c. Index-Federal Stock Number and Reference Number Cross Reference to Figure and Item Number or Reference Designation-Section IV. A list of Federal stock numbers in ascending numerical sequence, followed by a list of reference numbers in ascending alphanumeric sequence, cross-referenced to the illustration figure number and reference designation.

d. Index-Reference Designation Cross Reference to Page Number-Section V. A list of reference designations cross-referenced to page numbers.

1-3. Explanation of Columns

The following provides an explanation of columns in the tabular lists :

a. Source, Maintenance, and Recoverability Codes (SMR), Column 1.

(1) Source code indicates the selection status and source for the listed item. Source codes are:

Code

Explanation

- P Repair parts which are stocked in or supplied from the GSA/DSA, or Army supply system and authorized for use at indicated maintenance categories.
- M Repair parts which are not procured or stocked, but are to be manufactured at indicated maintenance levels.
- A Assemblies which are not procured or stocked as such, but are made up of two or more units. Such component units carry individual stock numbers and descriptions, are procured and stocked separately and can be assembled to form the required assembly at indicated maintenance categories.
- X Parts and assemblies which are not procured or stocked and the mortality of which normally is below that of the applicable end item or component. The failure of such part or assembly should result in retirement of the end item from the supply system.
- X1 Repair parts which are not procured or stocked. The requirement for such items will be filled by use of the next higher assembly or component.
- X2 Repair parts which are not stocked. The indicated maintenance category requiring such repair parts will attempt to obtain same through cannibalization. Where such repair parts are not obtainable through cannibalization, requirements will be requisitioned, with accompanying justification, through normal supply channels.
- G Major assemblies that are procured with PEMA funds for initial issue only as exchange assemblies at DSU and GSU level. These assemblies will not be stocked above DS and GS level or returned to depot supply level.
- (2) Maintenance code indicates the lowest category of maintenance authorized to install the listed item. The maintenance level codes are:

<i>Code</i>	<i>Explanation</i>
O	Organizational maintenance
P	Direct support maintenance
H	General support maintenance

(3) Recoverability code, indicates whether unserviceable items should be returned for recovery or salvage. Items not coded are expendable. Recoverability code is:

<i>Code</i>	<i>Explanation</i>
R	Repair parts and assemblies that are economically repairable at DSU and GSU activities and are normally furnished by supply on an exchange basis.

b. **Federal Stock Number, Column 2.** This column indicates the Federal stock number assigned to the item and will be used for requisitioning purposes.

c. **Description, Column 3.** This column indicates the Federal item name and any additional description of the item required. A part number or other reference number is followed by the applicable five-digit Federal supply code for manufacturers in parentheses.

d. **Unit of Measure (U/M), Column 4.** A two-character alphabetic abbreviation indicating the amount or quantity of the item upon which the allowances are based, e.g., ft, ea, pr, etc.

e. **Quantity Incorporated in Unit, Column 5.** This column indicates the quantity of the item used in the KS-19A3. Subsequent appearances of the same item in the same assembly are indicated by the letters "REF"

f. **Allowances--30-Day DS/GS Maintenance, 1 Year Per Equipment (Contingency), and Depot Maintenance, Columns 6, 7, 8, and 9.** Items authorized for requisition as required are identified with an asterisk in the allowance column.

g. **Illustrations, Column 10.** This column is divided as follows:

(1) Figure number, column 10a. Indicates the figure number of the illustration in which the item is shown.

(2) Item number or reference designation, column 10b. Indicates the reference designation used to identify the item in the illustration.

1-4. Special Information

a. The following publications pertain to the KS-19A3.

TM 11-6720-216-10	Operator's Manual: Camera Set, Still Picture KS-19A3.
-------------------	---

TM 11-6720-216-20	Organizational Maintenance Manual: Camera Set, Still Pictures KS-19A3
-------------------	---

TM 11-6720-216-20P	Organizational Maintenance Repair Parts and Special Tools List: Camera Set, Still Picture KS-19A3.
--------------------	--

TM 11-6720-216-35	Direct and General Support and Maintenance Manual: Camera Set, Still Picture KS-19A3.
-------------------	---

b. Parts which require manufacture or assembly at a category higher than that authorized for installation will indicate in the source column the higher category, e.g., MH-0.

c. Dry batteries shown are used with the equipment but are not considered part of the equipment. They will not be preshipped automatically but are to be requisitioned in quantities necessary for the particular organization in accordance with SB 11-6.

1-5. Location of Repair Parts

a. This manual contains two cross-reference indexes (sec IV and sec V) to be used to locate a repair part when either the Federal stock number, reference number (manufacturer's part number), or reference designation is known. The first column in each index is prepared in numerical or alphanumeric sequence in ascending order. Where a Federal stock number is not listed, refer to the reference number (manufacturer's part number) immediately following the Federal stock number.

b. When the Federal stock number or reference number is known, follow the procedures given in (1) and (2) below.

(1) Refer to the index of Federal stock numbers (sec IV) and locate the Federal stock number. The FSN is cross-referenced to the applicable figure and reference designation.

(2) When the reference designation is determined, refer to the reference designation index (sec V). The reference designations are listed in alphanumeric ascending order and are cross-referenced to the page number on which they appear in the repair parts lists (sec II). Refer to page number noted in the index and locate the reference designation in the repair parts lists (col 10b).

c. When the reference designation is known, follow the procedures given in b(2) above

d. When neither the FSN, reference number, nor reference designation is known, identify the part in the illustration and follow directions given in c above; or scrutinize column 3 of the repair parts lists (sec II)

1-6. Federal Supply Code for Manufacturers

Codes	Manufacturer
20881	Wollensak Optical Co.
28066	Cambridge Electronics Incorporated
33173	General Electric Co. Tube Dept.
47904	Polaroid Corporation
56280	Sprague Electric Co.
63515	Walker Co. Incorporated
75915	Little fuse Incorporated
81349	Military Specifications
88044	Aeronautical Standards
91802	Industrial Devices Inc.
96906	Military Standards
99176	Maat Development Company

1-7. Recommendations for Maintenance Publication Improvements

Reporting of errors, omissions, and recommendations for improving this publication by the individual user is encouraged. Reports should be submitted on DA Form 2028 (Recommended Changes to Publications) and forwarded direct to Commanding General, US Army Electronics Command, ATTN: AMSEL-MA-S, Fort Monmouth, NJ 07703.

SECTION II REPAIR PARTS FOR DIRECT SUPPORT, GENERAL SUPPORT, AND DEPOT MAINTENANCE

(1) SUB CODE	(2) FEDERAL SUPPLY NUMBER	(3) DESCRIPTION REFERENCE NUMBER & APL CODE	(4) UNIT OF MEAS	(5) QTY REQ'D	(6) 30-DAY IS MANT ALLOTTMENT						(7) 30-DAY IS MANT ALLOTTMENT		(8) AVG REPAIR COST (\$)	(9) AVG REPAIR COST (\$)	(10) CLASSIFICATION		
					(a)		(b)		(c)		(d)					(11) FILE NO	(12) ITEM NO. IN REPAIR KIT
					(1) 1-20	(2) 21-50	(3) 51-100	(4) 1-20	(5) 21-50	(6) 51-100	(7) 1-20	(8) 21-50					
		CAMERA SET, STILL PICTURE MS-1943 Fold-down-Lens Camera body, w/F1.5 lens and shutter, stereo attachment turret, and tripod; w/Electronic Flash Unit THIS ITEM IS NONREPAIRABLE															
P-O-R	6720-973-2646	CAMERA, STILL PICTURE 001-156 (99176)	EA	1	*	*	*	*	*	*	*	*	*	2-3	MP10		
ME-O		REVIEW 001-041 (99176)	EA	2										2-4	MP3		
X2-O		SHAFT, RETAINING 001-213 (99176)	EA	1										-1	MP-		
P-O	5340-164-6620	RING, RETAINING MS16632-1037 (96906)	EA	1	*	*	*	*	*	*	*	*	*	-1	MP5		
X2-O		PLATE, IDENTIFICATION 001-097 (99176)	EA	1											MP6		
X2-F		PLUNGER, BALL B58B (99176)	EA	-											MP7		
P-H	6720-981-8688	ACTUATOR, DOUBLE EXPOSURE LA"CH 001-011 (99176)	EA	1			*	*	*	*	*	*	*	2-1	MP8		
X2-H		CAMERA BACK, WITH ADAPTER 001-088 (99176)	EA	1										2-1	MP9		
X2-H		BACK, CAMERA 001-040 (99176)	EA	1										2-1	MP10		
X2-H		ADAPTER, CAMERA BACK 001-023 (99176)	EA	1										2-1	MP11		
X2-H		SCREW, MACHINE MS35269-43 (96906)	EA	6										2-1	MP12		
X2-H		SETScrew MS51017-47 (96906)	EA	1										2-1	MP13		
X2-H		SETScrew MS51041-40 (96906)	EA	1										2 1	MP13,5		
X2-F		PLATE, MOUNTING, CAMERA HOUSING 001-003 (99176)	EA	1										2-1	MP14		
X2-H		SCREW, MACHINE MS35269-45 (96906)	EA	4										2-1	MP15		
X1-F		BODY, CAMERA 001-002 (99176)	EA	1										2-1	MP16		
P-H-R	6760-981-8700	LENS AND SHUTTER ASSEMBLY 001-056 (99176)	EA	1			*	*	*	*	*	*	*	2-1	MP17		
P-H	6720-981-8682	SHIM, FOCUS 001-039 (99176)	EA	2			*	*	*	*	*	*	*	2-1	MP18		
P-O	6760-981-8683	COVER, LENS 001-300 (99176)	EA	1	*	*	*	*	*	*	*	*	*	2-1	MP19		
X1-H		ELEMENT, FRONT, LENS 001-301 (99176)	EA	1										2-2	MP20		
X1-H		PLATE, FRONT 001-302 (99176)	EA	1										2-2	MP21		
P-O	5305-988-0910	SCREW, MACHINE 001-199 (99176)	EA	2	*	*	*	*	*	*	*	*	*	2-2	MP22		
X1-H		ADAPTER, FRONT LENS TO SHUTTER BODY 001-303 (99176)	EA	1										2-2	MP23		

SECTION II REPAIR PARTS FOR DIRECT SUPPORT, GENERAL SUPPORT, AND DEPOT MAINTENANCE (CONTINUED)

(1) NO. QDE	(2) FEDERAL STORE NUMBER	(3) DESCRIPTION REFERENCE NUMBER & MFR. CODE	(4) USABLE ON CODE	(5) QTY OR MEAS. UNIT	(6) 30-DAY GS MAINT ALLOWANCE			(7) 30-DAY GS MAINT ALLOWANCE			(8) L ALM PER EQUIP CMTY	(9) DEPOT MAINT PER EQUIP	(10) FIG NO.	(11) ILLUSTRATION OR REFERENCE IDENTIFICATION
					(a) 1-20	(b) 21-50	(c) 51-100	(a) 1-20	(b) 21-50	(c) 51-100				
CI-H		BODY SEVER ASSEMBLY, SHUTTER OO1-305 (99176)	EA	1									MP24	
CI-H		SCREW, MACHINE OO1-304 (99176)	EA	2								2-2	MP25	
P-H	6760-072-0954	SEVER, SHUTTER BODY OO1-305 (99176)	EA	1				*	*	*	*	2-2	MP26	
P-H	6760-072-0935	SPEED CAM AND LEVER OO1-309 (99176)	EA	1				*	*	*	*	2-2	MP27	
P-H	5305-988-0910	SCREW, MACHINE OO1-199 (99176)	EA	3	*	*	*	*	*	*	*	2-2	MP27.1	
CI-H		SHUTTER ASSEMBLY OO1-310 (99176)	EA	1								2-2	MP28	
CI-H		SHUTTER BODY OO1-314 (99176)	EA	1								2-2	MP29	
P-H	6760-072-0933	PLATE, P STOPS OO1-100 (99176)	EA	1				*	*	*	*	2-2	MP30	
P-H	5305-988-0910	SCREW, MACHINE OO1-199 (99176)	EA	2	*	*	*	*	*	*	*	2-2	MP31	
P-H	6760-072-0332	IRIS AND HOUSING ASSEMBLY OO1-331 (99176)	EA	1				*	*	*	*	2-2	MP32	
CI-H		SCREW, MACHINE MS35245-6 (96900)	EA	3								2-2	MP33	
CI-H		LENS ELEMENT, REAR OO1-336 (99176)	EA	1								2-2	MP34	
P-H	6760-981-8691	SYNCHRONIZATION PARTS KIT Synchronizes lens and shutter OO1-36C (79176)	EA	1				*	*	*	*	2-2	MP35	
CI-H		PIN, CONNECTOR, SHORT OO1-317 (99176)	EA	1								2-2	P1	
CI-H		PIN, CONNECTOR, LONG OO1-318 (99176)	EA	1								2-2	P2	
CI-H		INSULATOR, MALE PLUG OO1-316 (99176)	EA	1								2-2	E1	
CI-H		NUT, HEXAGON MS35649-25 96906	EA	1								2-2	MP36	
I-H		INSULATOR, CONNECTOR PIN OO1-325 (99176)	EA	1								2-2	E2	
P-H		SCREW, LEVER RETAINING OO1-322 (99176)	EA	1									MP37	
CI-H		INSULATOR, ACTUATOR OO1-340 (99176)	EA	1								2-2	E3	
CI-H		CONTACT FINGER OO1-327 (99176)	EA	1								2-2	E4	
CI-H		STRIP, CONTACT OO1-339 (99176)	EA	1								2-2	E5	
P-H	6760-981-5052	SPEED CAM KIT OO1-361 (99176)	EA	1				*	*	*	*	2-2	MP38	
CI-H		FINGER, SPEED CAM, LONG OO1-307 (99176)	EA	2								2-2	MP39	
CI-H		FINGER, SPEED CAM, SHORT OO1-308 (99176)	EA	1								2-2	MP40	
CI-H		SCREW, MACHINE MS35245-2 (96906)	EA	3								2-2	MP40.1	
P-H	6760-981-5053	COCKING LEVER KIT OO1-362 (99176)	EA	1				*	*	*	*		MP41	

SECTION II REPAIR PARTS FOR DIRECT SUPPORT, GENERAL SUPPORT, AND DEPOT MAINTENANCE (CONTINUED)

(1) SIC CODE	(2) FEDERAL STOCK NUMBER	(3) DESCRIPTION	(4) UNIT OF MEAS	(5) QTY REQ	(6) 30-DAY DIS AVAIL						(7) 30-DAY DIS AVAIL	(8) DISP	(9) DISP	(10) DISP	(11) DISP	(12) DISP	(13) DISP	(14) DISP	(15) DISP	(16) DISP	(17) DISP	(18) DISP								
					ALL SOURCE		CONTRACT		INVENTORY														CONTRACT		INVENTORY		CONTRACT		INVENTORY	
					(a)	(b)	(c)	(d)	(e)	(f)													(g)	(h)	(i)	(j)	(k)	(l)	(m)	(n)
X1-H		SCREW, LEVER, RETAINING 001-322 (99176)	EA	3																		MP-1								
X1-H		SPRING, COCKING LEVER 001-321 (99176)	EA	2																		MP-2								
X1-H		LEVER, COCKING 001-328 (99176)	EA	2																		MP-3								
P-H	6720-961-8699	MAIN LEVER KIT 001-363 (99176)	EA	2		*	*	*	*	*	*	*	*	*	*	*	*	*	*	*	*	MP-4								
X1-H		LEVER, ACTUATOR 001-324 (99176)	EA	1																		MP-5								
X1-H		SPRING, ACTUATOR LEVER 001-323 (99176)	EA	1																		MP-6								
P-H	6760-981-5048	RELEASE LEVER KIT 001-364 (99176)	EA	1		*	*	*	*	*	*	*	*	*	*	*	*	*	*	*	*	MP-7								
X1-H		SPRING, RELEASE LEVER 001-329 (99176)	EA	1																		MP-8								
X1-H		LEVER, RELEASE 001-320 (99176)	EA	1																		MP-9								
P-H		CABLE RELEASE SOCKET KIT 001-365 (99176)	EA	1		*	*	*	*	*	*	*	*	*	*	*	*	*	*	*	*	MP-50								
X1-H		SCREW, LEVER RETAINING 001-322 (99176)	EA	1																		MP-50.1								
X1-H		SOCKET, CABLE RELEASE 001-319 (99176)	EA	1																		MP-51								
P-H	6760-981-5051	ACTUATOR KIT 001-366 (99176)	EA	1		*	*	*	*	*	*	*	*	*	*	*	*	*	*	*	*	MP-52								
X1-H		SCREW, LEVER RETAINING 001-322 (99176)	EA	1																		MP-52.1								
X1-H		SPRING, ACTUATOR 001-326 (99176)	EA	1																		MP-53								
X1-H		ACTUATOR 001-328 (99176)	EA	1																		MP-54								
P-H	6760-981-8684	IRIS ASSEMBLY KIT 001-367 (99176)	EA	1		*	*	*	*	*	*	*	*	*	*	*	*	*	*	*	*	MP-55								
X1-H		RING, IRIS ADJUSTING 001-330 (99176)	EA	1																		MP-56								
X1-H		IRIS ASSEMBLY 001-333 (99176)	EA	1																		MP-57								
P-H	6760-981-8685	IRIS RETAINING KIT 001-368 (99176)	EA	1		*	*	*	*	*	*	*	*	*	*	*	*	*	*	*	*	MP-58								
X1-H		FINGER, IRIS HOLD DOWN 001-334 (99176)	EA	3																		MP-59								
X1-H		SCREW, IRIS HOLD DOWN FINGER 001-335 (99176)	EA	1																		MP-60								
P-H	6760-981-5047	SHUTTER LEAF RETAINING KIT 001-369 (99176)	EA	1		*	*	*	*	*	*	*	*	*	*	*	*	*	*	*	*	MP-61								
X1-A		PLATE, SHUTTER LEAF, FRONT 001-312 (99176)	EA	1																		MP-62								
X1-H		PLATE, SHUTTER LEAF, REAR 001-313 (99176)	EA	1																		MP-63								
X1-H		SCREW, MACHINE MS35245-1 (96906)	EA	3																		MP-64								
P-H	6760-981-5046	SHUTTER LEAF KIT 001-370 (99176)	EA	1		*	*	*	*	*	*	*	*	*	*	*	*	*	*	*	*	MP-65								

SECTION II REPAIR PARTS FOR DIRECT SUPPORT, GENERAL SUPPORT, AND DEPOT MAINTENANCE (CONTINUED)

(1) PART CODE	(2) GENERAL PART NUMBER	(3) DESCRIPTION USABLE ON CODE	(4) UNIT OF MEAS.	(5) QTY INC IN UNIT	(6) 30-DAY QS MAINT ALLOWANCE			(7) 30-DAY QS MAINT ALLOWANCE			(8) ALY PER EQUIP CATEGORY	(9) DEPOT MAINT REQ GROUP	(10) ITEM NO. OR REFERENCE DESCRIPTION
					(a)	(b)	(c)	(a)	(b)	(c)			
					1-25	21-50	51-100	1-25	21-50	51-100			
01-rt		LEAF, SHUTTER 001-115 (99176)	EA	5								2-2	MP66
X1-rt		HOUSING, LEAF ASSEMBLY 001-112 (99176)	EA	-									MP67
01-rt		RENG. SHUTTER LEAF DRIVE 001-111 (99176)	EA	1								2-2	MP68
P-rt	6720-981-8690	NUT, LENS AND SHUTTER 001-117 (99176)	EA	1				*	*	*	*	2-2	MP69
P-0	6720-981-8690	CABLE RELEASE, PHOTOGRAPHIC SHUTTER A10329 (29315)	EA	1	*	*	*	*	*	*	*	2-7	MP71
X1-0		CROOV-PIN -33212 (99176)	EA	1								2-1	MP72
P-	6720-981-8690	STEREOSCOPIC ATTACHMENT 001-095 (99176)	EA	1	*	*	*	*	*	*	*	2-1	MP73
X1-0		HOUSING, STEREO ATTACHMENT 001-090 (99176)	EA	1									MP74
X1-0		MIRROR, GLASS, INNER 001-093 (99176)	EA	2									MP75
X1-0		MIRROR, GLASS, OUTER 001-094 (99176)	EA	2									MP76
X1-0		PLATE, FRONT 001-092 (99176)	EA	1									MP77
P-0		KNOB 001-128 (99176)	EA	1	*	*	*	*	*	*	*	2-1	MP78
X1-4		SCREW, CAP, SOCKET HEAD MS35457-55 (96906)	EA	1									MP79
P-0	6760-981-8689	TUBE LATCH ASSEMBLY 001-087 (99176)	EA	3	*	*	*	*	*	*	*	2-1	MP80
X1-0		SCREW, MACHINE MS35233-14 (96906)	EA	6								2-1	MP81
V1-0		LATCH BODY 001-031 (99176)	EA	1								2-1	MP82
X1-0		PIN, SPRING MS171500 (96906)	EA	1									MP83
P-0	6720-981-8687	LATCH, DOUBLE EXPOSURE 001-012 (99176)	EA	1	*	*	*	*	*	*	*	2-1	MP84
X1-0		WASHER, LOCK MS35335-15 (96906)	EA	1								2-1	MP85
X1-0		SCREW, MACHINE MS35233-14 (96906)	EA	1								2-1	MP86
G-0		TRIPOD, PHOTOGRAPHIC 001-115 (99176)	EA	1								2-4	MP87
X2-0		TUBE, OUTER 001-105 (99176)	EA	1									MP88
X2-0		PLUG, HINGE 001-101 (99176)	EA	1									MP89
X2-0		SCREW, SELF-TAPPING MS35235-27 (96906)	EA	3									MP90
X4-C		TUBE, INNER 001-106 (99176)	EA	1									MP91
X2-0		PLUG, HOLE 001-359 (99176)	EA	1									MP91 5

SECTION II REPAIR PARTS FOR DIRECT SUPPORT, GENERAL SUPPORT, AND DEPOT MAINTENANCE (CONTINUED)

(1) SIC CODE	(2) FEDERAL STOCK NUMBER	(3) DESCRIPTION REFERENCE NUMBER & MFR. CODE	(4) UNIT OF MEAS	(5) QTY REQ'D UNITS	(6) 30-DAY GS ALL-INT ALL-ORANGE						(7) 30-DAY GS ALL-INT ALL-ORANGE			(8) AVG AGE EQUIP CATEGORY	(9) DEPOT MAINT ADD'L EQUIP	(10) ITEM AND REF REFERENCE DESCRIPTION	
					(a)		(b)		(c)		(a)		(b)				(c)
					1-20	21-30	31-40	41-50	1-20	21-30	31-40	41-50	1-20				21-30
X2-0		CUMMER BALANCE ASSEMBLY 001-352 (99176)	EA	1											MP92		
X2-0		LEG AND ROD ASSEMBLY 001-354 (99176)	EA	1											MP93		
X2-0		SPRIG 001-352 (99176)	EA	2											MP94		
X2-0		FIN, GROOVED, HEATLESS 001-351 (99176)	EA	2											MP95		
X2-0		SPRING, NEGATOR H12K36 (99176)	EA	2											MP96		
X2-0		WASHER, NON-METALLIC 001-358 (99176)	EA	4											MP97		
X2-0		RING, RETAINING MS16633-1025 (96906)	EA	4											MP98		
X2-0		SPRING, ANCHOR 001-356 (99176)	EA	1											MP99		
X2-0		NUT, HEXAGON MS35649-84 (96906)	EA	2											MP100		
X2-0		WASHER, FLAT MS15795-310 (96906)	EA	1											MP101		
X2-0		LINK, LEG 001-190 (99176)	EA	3											MP106		
X2-0		SCREW, MACHINE, MS35236-67 (96906)	EA	3											MP107		
X2-0		NUT, STOP 22K1-1032 (99176)	EA	3											MP102		
X2-0		LEG ASSEMBLY 001-186 (99176)	EA	3											MP103		
X2-0		STUD, PLAIN 001-114 (99176)	EA	3											MP104		
X2-0		NUT, STOP 22K1-420 (99176)	EA	6											MP105		
X2-0		LEG TUBE ASSEMBLY, OUTER 001-375 (99176)	EA	3											MP106.1		
X2-0		LEG TUBE ASSEMBLY, INNER 001-376 (99176)	EA	3											MP107.1		
X2-0		SCREW, MACHINE MS35226-70 (96906)	EA	3											MP108		
X2-0		STOP NUT 22K1-1032 (99176)	EA	3											MP109		
X2-0		STOP, EXTENSION 001-184 (99176)	EA	1											MP110		
X2-0		CLAMP 001-160 (99176)	EA	1											MP111		
X2-0		KNOB ASSEMBLY 001-187 (99176)	EA	1											MP112		
X2-0		WASHER, LOCK MS15795-210 (96906)	EA	1											MP113		
P-0	5340-984-6179	BUMPER, RUBBER 001-183 (99176)	EA	1	*	*	*	*	*	*	*	*	*		MP114		
X2-0		HINGE, LEGS 001-117 (99176)	EA	1											MP115		
X2-0		LINER, HINGE 001-112 (99176)	EA	1											MP116		

SECTION II REPAIR PARTS FOR DIRECT SUPPORT, GENERAL SUPPORT, AND DEPOT MAINTENANCE (CONTINUED)

(1) SIB CODE	(2) FEDERAL SPECIFICATION NUMBER	(3) DESCRIPTION REFERENCE NUMBER & MFR. CODE	(4) UNIT OF MEAS.	(5) QTY REQ. IN UNIT	(6) 30-DAY GS AMOUNT ALLOWANCE			(7) 90-DAY GS AMOUNT ALLOWANCE			(8) LIFE CYCLE PERCENTAGE	(9) DEFECT RATES PER 1000 HOURS OF EQUIP.	(10) ILLUSTRATIONS	
					(a) 1-20	(b) 21-50	(c) 51-100	(d) 1-20	(e) 21-50	(f) 51-100			(a) FIG. NO.	(b) ITEM NO. OR REFERENCE INFORMATION
X2-0		KNIB J01-172 (99176)	EA	1									MP117	
X2-0		KNIB 001-171 (99176)	EA	1									MP118	
X2-0		WASHER, FLAT MS140-715 (99176)	EA	2									MP119	
X2-0		CLAMP, HEIGHT ADJUST J01-13 (99176)	EA	1									MP120	
X2-0		LINER CLAMP J01-11 (99176)	EA	1									MP121	
X2-0		SCREW, MACHINE, MS35251-90 (96906)	EA	1									MP122	
G-0	6760-983-3978	TITLEBOARD TUBE AND HOLDER ASSEMBLY 001-004 (99176)	EA	1								2-3	MP124	
X2-0		TUBE, TITLEBOARD 001-029 (99176)	EA	1									MP125	
X2-0		CONTACTOR ASSEMBLY 001-018 (99176)	EA	1									MP126	
X2-0	5305-763-6962	SCREW, MACHINE MS35249-34 (96906)	EA	1									MP127	
X2-0		HOLDER ASSEMBLY, TITLEBOARD 001-065 (99176)	EA	1									MP128	
X2-0		BODY, TITLEBOARD HOLDER 001-067 (99176)	EA	1									MP129	
X2-0		HOOK, TITLEBOARD 001-066 (99176)	EA	1									MP130	
X2-0		SPRING, HELICAL, COMPRESSION 001-068 (99176)	EA	1									MP131	
X2-0		BUTTON, TITLEBOARD 001-069 (99176)	EA	1									MP132	
X2-0		SCREW, MACHINE MS35266-63 (96906)	EA	1									MP133	
X2-0	5310-934-9751	NUT, PLAIN, HEXAGON MS35650-102 (96906)	EA	1									MP134	
P-0	6760-983-3980	TITLEBOARD, S'T, PHOTOGRAPHIC 001-140 (99176)	EA	1	*	*	*	*	*	*	*	*	MP135	
P-0	6760-981-8692	CASE WITH TITLEBOARD CHARACTER SET 001-141 (99176)	EA	2	*	*	*	*	*	*	*	*	MP136	
X2-0		CASE, TITLEBOARD CHARACTER SET 001-142 (99176)	EA	1									MP137	
X2-0		LETTERS AND NUMERALS, SIGN 001-143 (99176)	EA	1									MP138	
X2-0		TITLEBOARD 001-144 (99176)	EA	6									MP139	
X-0		SPEEDLIGHT ASSEMBLY, LEFT HAND	EA	1									MP140	
X2-0		HOUSING, LIGHT UNIT DE1130 (99176)	EA	1								2-5	MP141	
X2-0		SLEEVE, LIGHT UNIT DE1131 (99176)	EA	1								2-5	MP142	

SECTION II REPAIR PARTS FOR DIRECT SUPPORT, GENERAL SUPPORT, AND DEPOT MAINTENANCE (CONTINUED)

(1) SIC CODE	(2) FEDERAL STOCK NUMBER	(3) DESCR. OF ITEM	(4) UN. OF MEAS.	(5) QTY. REQ. IN UNIT	(6) 30-DAY DIS. AMT. ALLOWANCE			(7) 90-DAY DIS. AMT. ALLOWANCE			(8) DEPOT REPAIR EQUIP. ENTRANCE	(9) DEPOT REPAIR EQUIP. EXIT	(10) ILLUSTRATION NO.	(11) REMARKS OR REVISIONS
					(a) 1-30	(b) 31-60	(c) 61-90	(d) 1-30	(e) 31-60	(f) 61-90				
12-0		SETScrew MS1021-22 (96906)	EA	5									2-5	MP145
12-0		REFLECTOR, LIGHT DEL130 (99176)	EA	1									2-5	MP146
12-0		SETScrew MS1021-22 (96906)	EA	2									2-5	MP145
P-0	6240-774-6110	ELECTRON TUBE PT-12C (33173)	EA	1	*	*	*	*	*	*	*		2-5	V1
12-0		SOCKET, ELECTRON TUBE DE72A (99176)	EA	1									2-5	XV1
12-0		D.S.C., INSULATING K9661 (99176)	EA	1									2-5	BE
P-P	5950-708-2165	TRANSFORMER T22115B (99176)	EA	1	*	*	*	*	*	*	*		2-5	T1
P-P	5910-984-8368	CAPACITOR, FILLED, ELECTROLYTIC 146P27492 (56289)	EA	1	*	*	*	*	*	*	*		2-5	C1
12-0		CAP, SLEEVE DEL132 (99176)	EA	1									2-5	MP146
12-0		SCREW, MACHINE MS35233-13 (96906)	EA	2									2-5	MP147
12-0		WASHER, LOCK MS35333-36 (96906)	EA	2									2-5	MP148
12-0		BOX CONNECTOR, ELECTRICAL NL90-75L (99176)	EA	1									2-5	MP149
12-0		NUT, COUPLING 10588 (99176)	EA	1										MP150
12-0		BONDNUT, ELECTRICAL CONDUIT 10589 (99176)	EA	1										MP151
12-0		STRAIN RELIEF 6 (63515)	EA	1									2-5	MP152
12-0		CABLE ASSEMBLY, SPECIAL PURPOSE, ELECTRICAL 001-152 (99176)	EA	1									2-5	W1
12-0	5935-201-2968	CONNECTOR, PLUG, ELECTRICAL MS3106A-16-9P (96906)	EA	1									2-5	W1P1
12-0	5935-688-4026	ADAPTER, CABLE TO CONNECTOR AN3057-8 (88044)	EA	1									2-5	W1CP1
12-0		CABLE, SPECIAL PURPOSE, ELECTRICAL 001-154 (99176)	EA	1									2-5	MP153
12-0		GROMMET, RUBBER 230 (99176)	EA	1									2-5	MP154
12-0		TUBE ASSEMBLY, LEFT HAND 001-124 (99176)	EA	1									2-5	MP155
12-0		TUBE, SPEEDLIGHT, LEFT HAND 001-119 (99176)	EA	1										MP156
12-0		CONTACTOR ASSEMBLY 001-018 (99176)	EA	1										MP156 1
12-0	5305-763-6962	SCREW, MACHINE MS35249-34 (96906)	EA	1										MP156 2
X-0		SPEEDLIGHT ASSEMBLY, RIGHT HAND	EA	1										MP157
12-0		HOUSING, LIGHT UNIT DEL130 (99176)	EA	1									2-6	MP157 1
12-0		SLEEVE, LIGHT UNIT DEL131 (99176)	EA	1									2-6	MP157 2
12-0		SETScrew MS1021-22 (96906)	EA	5									2-6	MP157

SECTION II REPAIR PARTS FOR DIRECT SUPPORT, GENERAL SUPPORT, AND DEPOT MAINTENANCE (CONTINUED)

FEDERAL STOCK NUMBER	DESCRIPTION	UNITS OF MEAS	QTY	10-DAY QS MAINT ALLOWANCE			30-DAY QS MAINT ALLOWANCE			DEPOT MAINT PER EQUIP	FIG NO.	ITEM NO. OR REFERENCE DESIGNATION
				(a)	(b)	(c)	(a)	(b)	(c)			
				-20	21-50	51-100	-20	21-50	51-100			
	REFLECTOR, LIGHT	EA	1								MP157.1	
	SCREEN	EA	1								MP157.2	
	ELECTRON TUBE	EA	1	*	*	*	*	*	*		MP157.3	
	SOCKET, ELECTRON TUBE	EA	1								MP157.4	
	DISC, INSULATING	EA	1								MP157.5	
	TRANSFORMER	EA	1	*	*	*	*	*	*		MP157.6	
	CAPACITOR, FIXED, MICA	EA	1	*	*	*	*	*	*		MP157.7	
	CAP, SLEEVE	EA	1								MP157.8	
	SCREW, MACHINE	EA	2								MP157.9	
	WASHER, LOCK	EA	2								MP157.10	
	BOX, CONNECTOR ELECTRICAL	EA	1								MP157.11	
	NUT, COUPLING	EA	1								MP157.12	
	BONDMUT, ELECTRICAL, CONDUIT	EA	1								MP157.13	
	STRAIN RELIEF	EA	1								MP157.14	
	CABLE ASSEMBLY, SPECIAL PURPOSE, ELECTRICAL	EA	1								MP157.15	
	CONNECTOR, PLUG, ELECTRICAL	EA	1								MP157.16	
	ADAPTER, CABLE TO CONNECTOR	EA	1								MP157.17	
	CABLE, SPECIAL PURPOSE	EA	1								MP157.18	
	GROMMET, RUBBER	EA	1								MP157.19	
	TUBE ASSEMBLY, RIGHT HAND	EA	1								MP157.20	
	TUBE, SPEEDLIGHT, RIGHT HAND	EA	1								MP157.21	
	CONTACTOR ASSEMBLY	EA	1								MP157.22	
	SCREW, MACHINE, FLAT, HEAD	EA	1								MP157.23	
6135-164-8758	BATTERY, DRY	EA	4	*	*	*	*	*	*		MP157.24	
	BATTERY CASE AND CABLE ASSEMBLY	EA	1								MP157.25	
	BATTERY CASE ASSEMBLY	EA	1								MP157.26	
	BATTERY BOX	EA	1								MP157.27	

SECTION II REPAIR PARTS FOR DIRECT SUPPORT, GENERAL SUPPORT, AND DEPOT MAINTENANCE (CONTINUED)

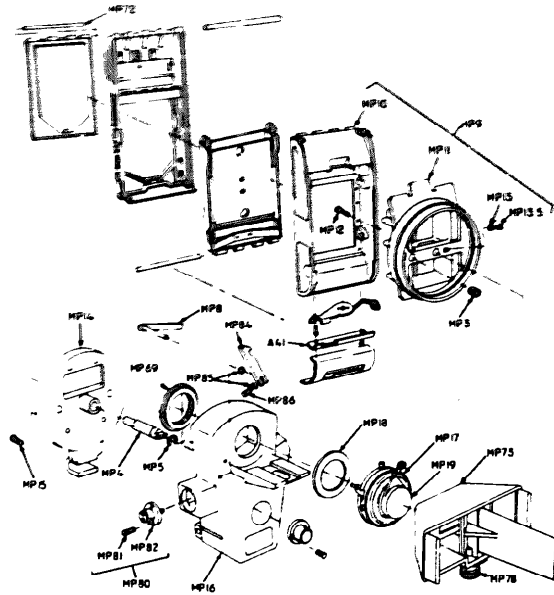
QTY	FEDERAL STOCK NUMBER	DESCRIPTION	UNITS	MATERIAL CODE	30-DAY DELIVERY ALLOWANCE						REPLACEMENT PARTS	REPLACEMENT PARTS	REPLACEMENT PARTS	REPLACEMENT PARTS	REPLACEMENT PARTS	REPLACEMENT PARTS	REPLACEMENT PARTS
					(1)	(2)	(3)	(4)	(5)	(6)							
12-0		PAL, RESERVE 001-103 (99176)	EA	-													MP1
12-0		PLATE, INSTRUCTION 001-135 (99176)	EA	-													MP1
12-0		RIVET, 3/32 x 3/16 BLDG (99176)	EA	-													MP1
P-0	6720-984-0962	CABLE ASSEMBLY, SPECIAL PURPOSE, ELECTRICAL 001-147 (99176)	EA	-	*	*	*	*	*	*	*	*	*	*	*	2-3	W3
12-0		CONNECTOR, PLUG ELECTRICAL 9706-3 (99176)	EA	4													W3P2
12-0		CONNECTOR, PLUG ELECTRICAL MS3106A-18-11S (96906)	EA	-													W3P3
12-0		ADAPTER, CABLE TO CONNECTOR AN3057-1C (88044)	EA	1													W3CP2
12-0		CABLE, SPECIAL PURPOSE 001-148 (99176)	EA	1													W3W2
12-0		WIRE, ELECTRICAL 001-149 (99176)	EA	3													W3W3
Y-0		POWER SUPPLY	EA	1												2-8	FS1
12-H		COVER AND INSTRUCTION PLATE 001-158 (99176)	EA	1													PSIMP166
12-H		COVER DD598 (99176)	EA	-												2-8	PSIMP167
12-H		PLATE, INSTRUCTION 001-134 (99176)	EA	1													PSIMP168
12-H		RIVET, 7/32 x 3/16 R-40C (99176)	EA	4													PSIMP168 1
11-H		SCREW, MACHINE MS35269-13 (96906)	EA	8												2-8	PSIMP169
11-H		CASE, POWER SUPPLY DG360 (99176)	EA	1												2-8	PSIMP170
12-0	5935-852-9611	CONNECTOR, RECEPTACLE, ELECTRICAL MS3102A-18-11P (96906)	EA	1												2-8	PS1J1
12-0		RIVET, 1/8 x 1/4 RAC-2 (99176)	EA	4													PSIMP171
P-0	5920-615-3909	FUSEHOLDER 342012 (75915)	EA	1	*	*	*	*	*	*	*	*	*	*	*	2-8	PS1XF1
P-0	5920-142-7376	FUSE, CARTRIDGE MDL (75915)	EA	1	*	*	*	*	*	*	*	*	*	*	*	2-8	PS1F1
P-C	5930-655-1508	SWITCH, TOGGLE MS25100-23 (96906)	EA	1	*	*	*	*	*	*	*	*	*	*	*	2-8	PS1S1
P-F	5950-984-1697	TRANSFORMER, POWER, STEP-UP TDE152 (99176)	EA	1	*	*	*	*	*	*	*	*	*	*	*	2-8	FS1T2
11-F		POOT, TRANSFORMER 001-161 (99176)	EA	4												2-8	PSIMP172
12-H		SCREW, MACHINE MS35225-28 (96906)	EA	4												2-8	PSIMP173
12-H		SCREW, MACHINE MS35225-32 (96906)	EA	4												2-8	PSIMP174
12-H	5310-579-0079	WASHER, LOCK MS35333-37 (96906)	EA	4												2-8	PSIMP175

SECTION II REPAIR PARTS FOR DIRECT SUPPORT, GENERAL SUPPORT, AND DEPOT MAINTENANCE (CONTINUED)

(1) PAR CODE	(2) FEDERAL TOYON NUMBER	(3) DESCRIPTION RE-SEARCH NUMBER & MFR. CODE	(4) USABLE IN CODE	(6) UNIT OF MEAS	(5) QTY INC UN	(8) 30-DAY GS MAINT ALLOWANCE			(7) 30-DAY GS MAINT ALLOWANCE			(9) A OR EQUIP CATG	(10) DEPOT MAINT PER 100 EQUIP	(11) FILE NO.	(12) ILLUSTRATIONS (13) ITEM NO. OR REFERENCE DESIGNATION
						(a) 1-20	(b) 21-50	(c) 51-100	(a) 1-20	(b) 21-50	(c) 51-100				
						*	*	*	*	*	*				
A	911-4-1-1-1-1	CAPACITOR, FIXED, ELECTROLYTIC "CLPA" (8129)		EA	2	*	*	*	*	*	*	*	*	2-8	PS1C1
B-F	911-4-1-1-1-1	CAPACITOR, FIXED, ELECTROLYTIC "CLPA" (8129)		EA	REF	*	*	*	*	*	*	*	*	2-8	PS1C2
L-11		SPACER, CAPACITOR D11-162 (99176)		EA	1	*	*	*	*	*	*	*	*	2-8	PSIMP176
L2-11		SCREW, MACHINE MS122-12 (96906)		EA	6	*	*	*	*	*	*	*	*	2-8	PSIMP176.1
L2-11		WASHER, LOCK MS1311-11 (96906)		EA	6	*	*	*	*	*	*	*	*	2-8	PSIMP176.2
B-F	5905-44-20	RECTIFIER, METALLIC R22-15659 (99176)		EA	1	*	*	*	*	*	*	*	*	2-8	PS1C1
L2-11		SCREW, MACHINE MS12241-11 (96906)		EA	1	*	*	*	*	*	*	*	*	2-8	PSIMP177
L-11		WASHER, LOCK MS13113-17 (96906)		EA	2	*	*	*	*	*	*	*	*	2-8	PSIMP177.1
L2-11		NUT, HEXAGON MS156-9-62 (96906)		EA	1	*	*	*	*	*	*	*	*	2-8	PSIMP178
X2-H		BOARD ASSEMBLY, RESISTOR AND CAPACITOR WL (99176)		EA	1	*	*	*	*	*	*	*	*	2-8	PSIMP179
X1-F		BOARD, RESISTOR AND CAPACITOR MOUNTING DE1127 (99176)		EA	1	*	*	*	*	*	*	*	*	2-8	PSIMP180
P-F	5905-542-9387	RESISTOR, FIXED, WIREWOUND 242E2025 (56289)		EA	2	*	*	*	*	*	*	*	*	2-8	PS1R1
P-F	5905-542-9387	RESISTOR, FIXED, WIREWOUND 242E2025 (56289)		EA	REF	*	*	*	*	*	*	*	*	2-8	PS1R2
P-F	5905-279-2628	RESISTOR, FIXED, COMPOSITION RC32GF35-J (81349)		EA	1	*	*	*	*	*	*	*	*	2-8	PS1R3
P-F	5905-299-1995	RESISTOR, FIXED, COMPOSITION RC3-GF334J (81349)		EA	1	*	*	*	*	*	*	*	*	2-8	PS1R4
P-F	5905-279-2509	RESISTOR, FIXED, COMPOSITION RC20GF25-J (81349)		EA	1	*	*	*	*	*	*	*	*	2-8	PS1R5
P-F	5905-279-2510	RESISTOR, FIXED, COMPOSITION RC20GF685J (81349)		EA	1	*	*	*	*	*	*	*	*	2-8	PS1R6
P-F	5910-837-2564	CAPACITOR, FIXED, PAPER D ELECTRIC 146P10492 (56289)		EA	1	*	*	*	*	*	*	*	*	2-8	PS1C3
X1-F		TERMINAL STUD X1463B (28385)		EA	7	*	*	*	*	*	*	*	*		PSIMP181
X2-F		SPACER, RESISTOR BOARD 4195 (99176)		EA	2	*	*	*	*	*	*	*	*	2-8	PSIMP182
X2-F		NUT, HEXAGON MS15649-62 (96906)		EA	2	*	*	*	*	*	*	*	*	2-8	PSIMP182.1
X2-F		WASHER, LOCK MS13113-17 (96906)		EA	4	*	*	*	*	*	*	*	*	2-8	PSIMP182.2
P-F	5935-833-6021	CONNECTOR, RECEPTACLE, ELECTRICAL MS3102A-16-9S (96906)		EA	2	*	*	*	*	*	*	*	*	2-8	PS1J3
P-F	5935-833-6021	CONNECTOR, RECEPTACLE, ELECTRICAL MS3102A-16-9S (96906)		EA	REF	*	*	*	*	*	*	*	*	2-8	PS1J4

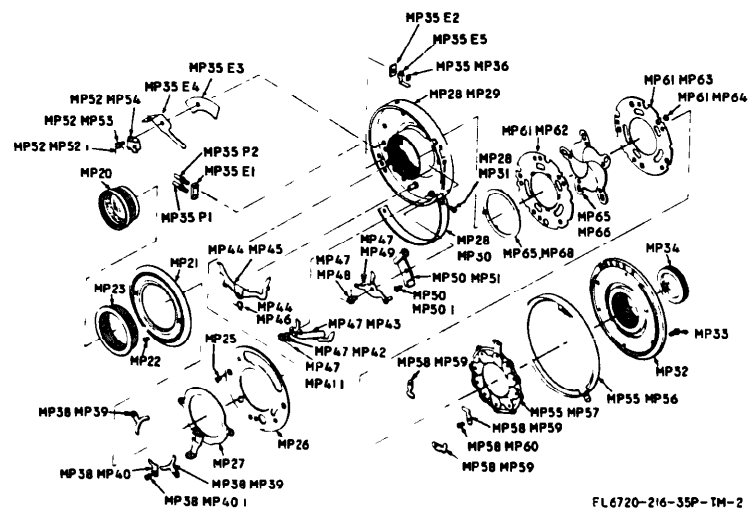
SECTION II REPAIR PARTS FOR DIRECT SUPPORT, GENERAL SUPPORT, AND DEPOT MAINTENANCE (CONTINUED)

(1) S CODE	(2) FEDERAL STOCK NUMBER	(3) DESCRIPTION	(4) UNITS PER ASSEMBLY	(5) UNITS PER ASSEMBLY	(6) 30-DAY SUPPLY			(7) 90-DAY SUPPLY			(8) REQUISITION CATEGORY	(9) DEFINITION CLASSIFICATION	(10) CLASSIFICATION
					(a) 1-20	(b) 21-50	(c) 51-100	(a) 1-20	(b) 21-50	(c) 51-100			
EX-C		RIVET, 1/8 x 1/4 BLD12 (99176)	EA	2								PSIMP187	
P-F	5935-118-3227	CONNECTOR, RECEPTACLE, ELECTRICAL MS3102A-12S-3S (46906)	EA	2	*	*	*	*	*	*	*	4-8	
EX-C		RIVET, 1/8 x 1/4 BLD12 (99176)	EA	4								PSIMP188	
P-F	6220-892-6271	LIGHT, INDICATOR 1060250 (91802)	EA	1	*	*	*	*	*	*	*	2-B	
P-F	5930-655-1907	SWITCH, TOGGLE MS25100-22 (96904)	EA	1	*	*	*	*	*	*	*	2-B	
L~		CLAMP, SCREW, AND CHAIN ASSEMBLY AP90 (99176)	EA	1								2-B	
XI-O		TEMPERATURE DEL.29 (99176)	EA	2								2-B	
XI-O		HEAD CHAIN NO. 6 OO1-160 (99176)	EA	1								2-B	
XI~		RIVET, 1/8 x 3/16 BLD12 (99176)	EA	2								2-B	
P-O	6720-986-0342	CABLE ASSEMBLY, SPECIAL PURPOSE, ELECTRICAL OO1-137 (99176)	EA	1	*	*	*	*	*	*	*	W4	
F-O		CABLE, SPECIAL PURPOSE OO1-131 (99176)	EA	1								W4W5	
XI-O		CONNECTOR, PLUG, ELECTRICAL MS3106A-12S-3P (96906)	EA	1								W4P4	
XI-O		ADAPTER, CABLE TO CONNECTOR AN3057-4 (98044)	EA	1								W4CP3	
P-O	6720-986-8615	CABLE ASSEMBLY, POWER ELECTRICAL OO1-138 (99176)	EA	1	*	*	*	*	*	*	*	W6	
XI-O		CABLE, SPECIAL PURPOSE, ELECTRICAL OO1-139 (99176)	EA	1								W6W7	
F-O	5935-636-7145	CONNECTOR, PLUG, ELECTRICAL MS91185-1 (96906)	EA	1	*	*	*	*	*	*	*	W6P4	
P-O		CONNECTOR, PLUG, ELECTRICAL MS3106A-18-113 (96906)	EA	1	*	*	*	*	*	*	*	W6P5	
P-O		ADAPTER, CABLE TO CONNECTOR AN3057-10 (98044)	EA	1	*	*	*	*	*	*	*	W6CP3	
G-O		CARRYING CASE OO1-016 (99176)	EA	1								MP187	
P-H	6720-650-6511	BRIDGE AND PRESSURE PLATE ASSEMBLY A-72314 (47904)	EA	1								2-7	
P-O	6720-650-6542	BACK DOOR ASSEMBLY DB2383 (47904)	EA	1	*	*	*	*	*	*	*	2-7	
P-H	6720-650-6533	LATCH, LEVER ASSEMBLY B-76189 (47904)	EA	1								2-1	



EL6720-216-35P-TM-1

Figure 2-1. Camera assembly, exploded view.



EL6720-216-35P-TM-2

Figure 2-2. Lens and shutter assembly.

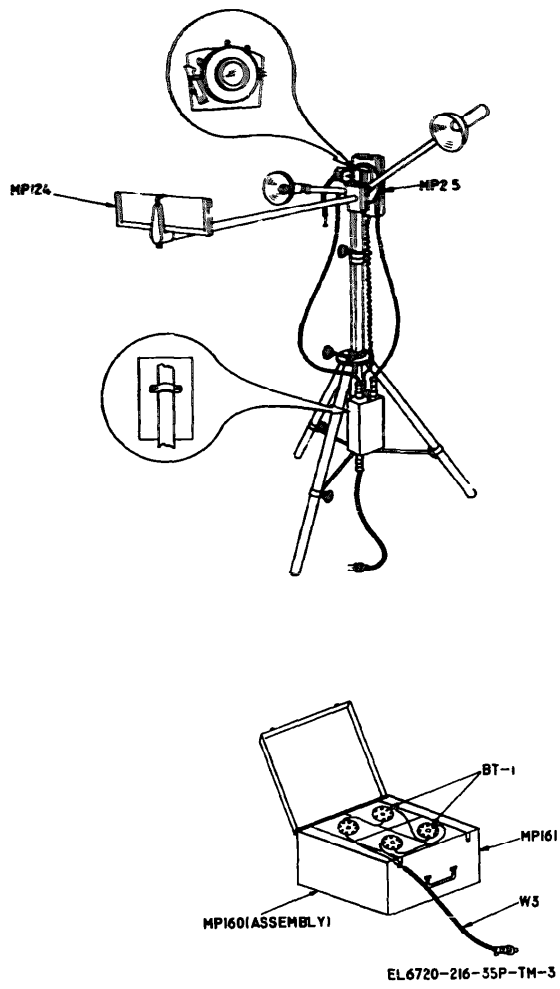


Figure 2-3. Camera set.

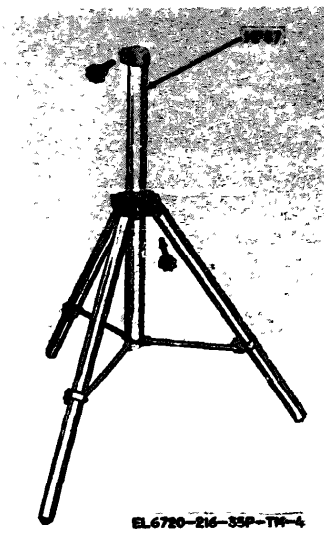


Figure 2-4. Tripod.

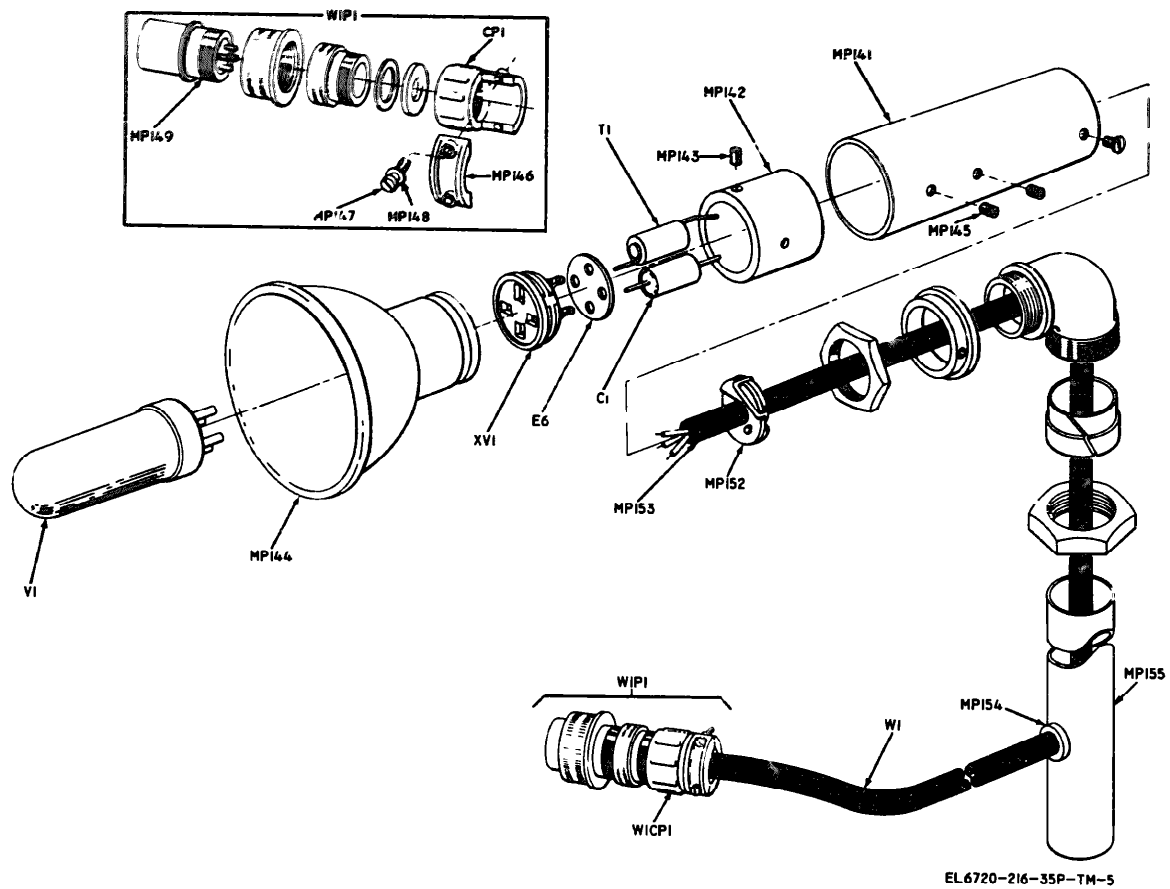


Figure 2-5. Lightarm assembly, left side.

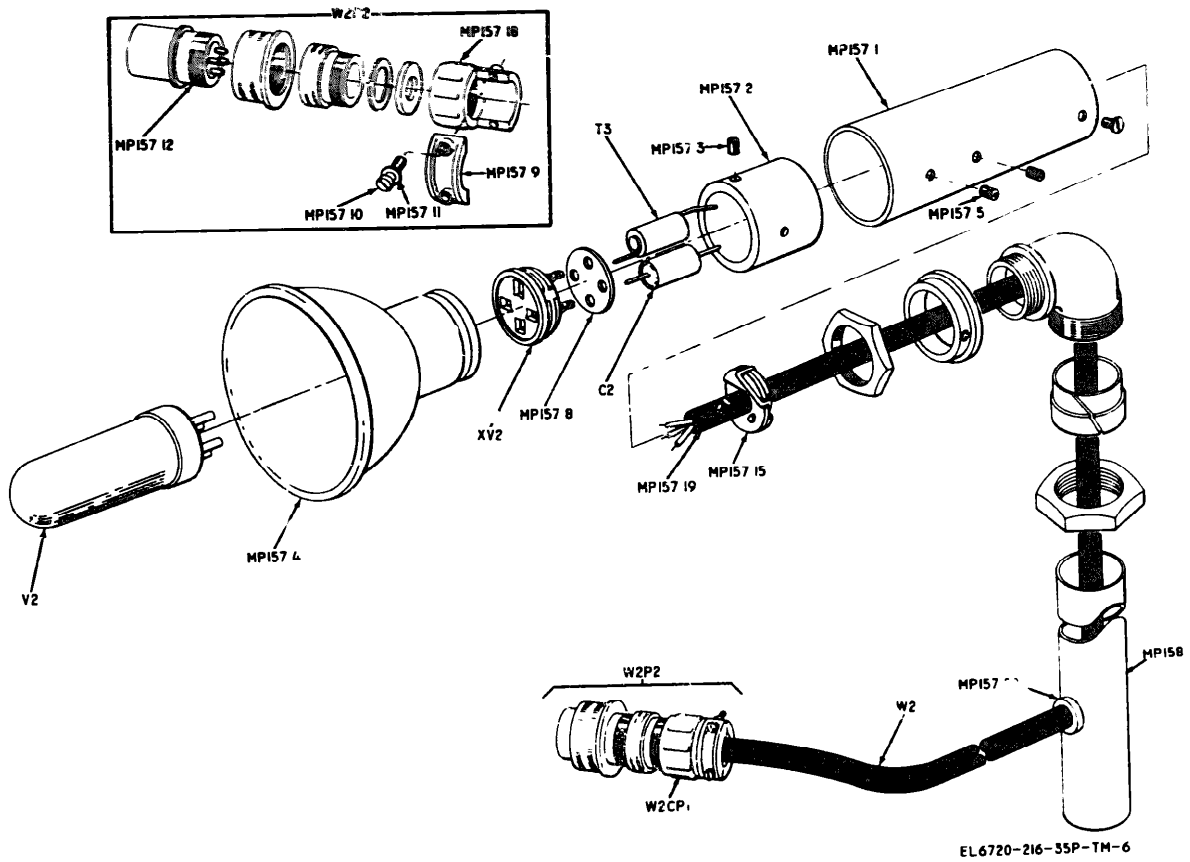
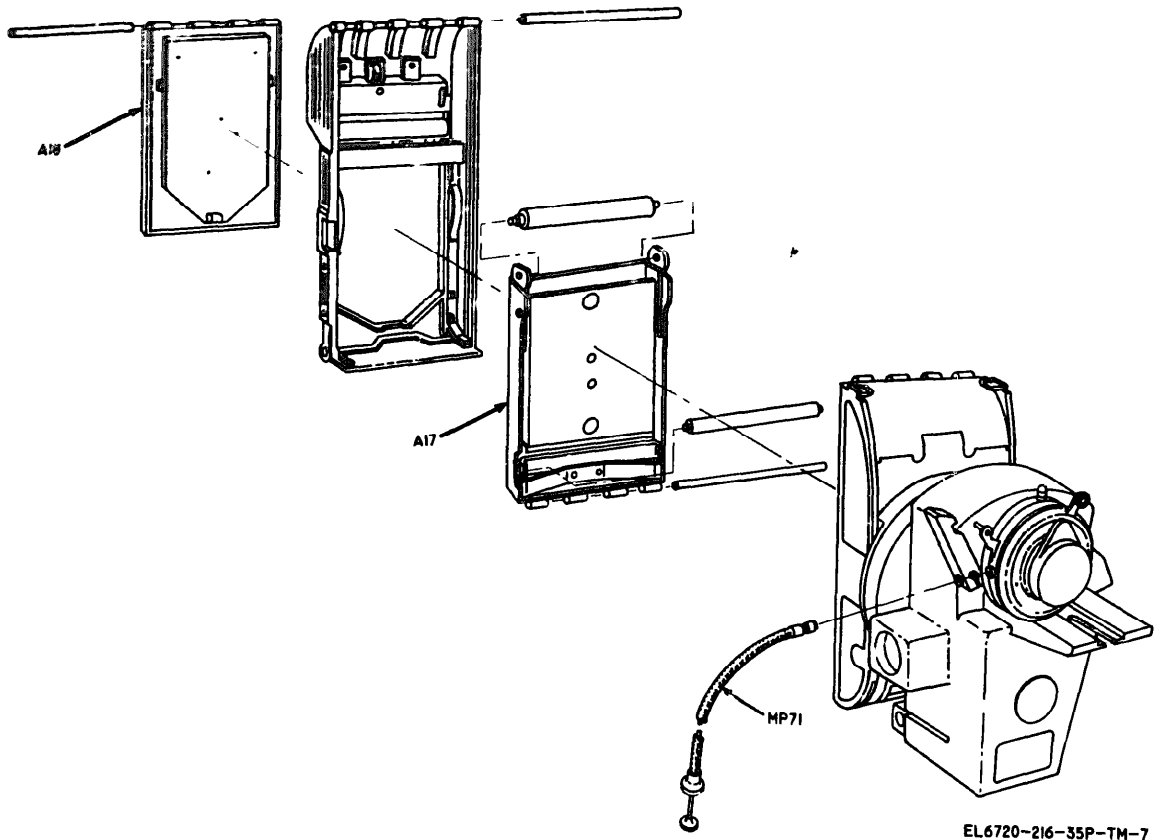


Figure 2-6. Lightarm assembly, right side



EL6720-216-35P-TM-7

Figure 2-7 Camera assembly, partial.



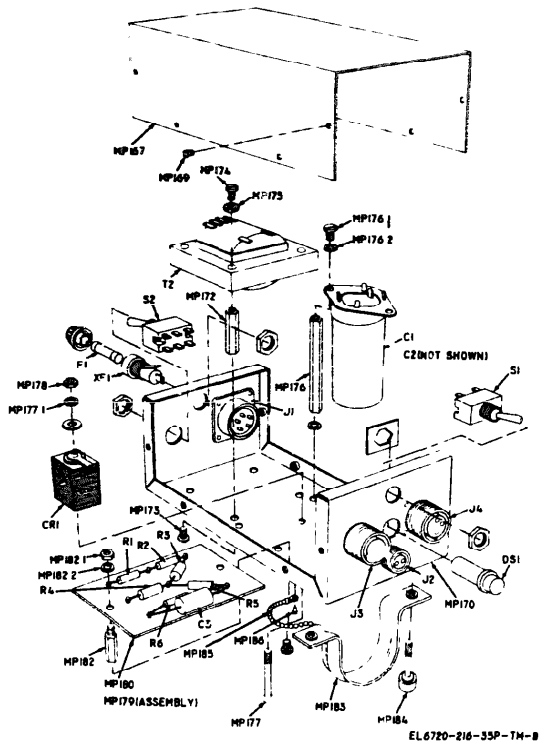


Figure 2-8. Power supply (PSI).

SECTION III SPECIAL TOOLS, TEST & SUPPORT EQUIPMENT FOR DIRECT SUPPORT, GENERAL SUPPORT & DEPOT MAINTENANCE

(1) ORG DEB	(2) FEDERAL STOCK NUMBER	(3) DESCRIPTION REFERENCE NUMBER & MFR. CODE	(4) UNIT OF MEAS	(5) QTY INC IN UNIT	(6) 30-DAY GS MAINT ALLOWANCE			(7) 90-DAY GS MAINT ALLOWANCE			(8) FOR EQUIP CONTCY	(9) DEPOT MAINT ALLOW PER EQUIP	(10) FIC NO.	(11) ITEM NO. OR REFERENCE DESIGNATION
					(a)	(b)	(c)	(a)	(b)	(c)				
					1-20	21-50	51-100	1-20	21-50	51-100				
B-1	5120-381-3041	REPAIR PARTS FOR REMOVING LEADS AND SHEATHS FROM CABLES (1-51-70)	EA	-	*	*	*	*	*	*	*	*	MEPS	

3-1/(3-2 blank)

SECTION IV INDEX-FEDERAL STOCK NUMBER AND REFERENCE NUMBER CROSS REFERENCE
TO FIGURE AND ITEM NUMBER OR REFERENCE DESIGNATION

FEDERAL STOCK NUMBER	FIGURE NUMBER	ITEM NUMBER OR REF. DESIGNATION	FEDERAL STOCK NUMBER	FIGURE NUMBER	ITEM NUMBER OR REF. DESIGNATION
5120-981-5044		MP70	6135-164-8758	2-3	BT1
5305-763-6962		MP127	5210-892-5271	2-8	PS1S1
5305-763-6962		MP156.2	6240-774-6116	2-1	T1
5305-988-0910	2-2	MP22	6240-774-6116	2-6	V2
5305-988-0910	2-2	MP27.1	6720-650-6511	2-7	A17
5305-988-0910	2-2	MP31	6720-650-6533	2-1	A41
5310-579-0079	2-8	PS1MP175	6720-650-6542	2-7	A18
5310-934-9751		MP134	6720-973-2646	2-3	MP2 5
5340-584-6620	2-1	MP5	6720-981-8682	2-1	MP18
5340-984-6179		MP114	6720-981-8687	2-1	MP84
5905-279-2509	2-8	PS1F	6720-981-8688	2-1	MP8
5905-279-2510	2-8	PS1R6	6720-981-8690	2-1	MP73
5905-279-2618	2-8	PS1R3	6720-981-8699	2-2	MP44
5905-299-1995	2-8	PS1R4	6720-984-0962	2-3	W3
5905-542-9387	2-8	PS1R1	6720-986-0342		W4
5905-542-9387	2-8	PS1R2	6720-986-8615		W6
5910-652-8928		PS1C2	6760-072-0932	2-2	MP32
5910-652-8928	2-8	PS1C1	6760-072-0933	2-2	MP30
5910-837-2564	2-8	PS1C3	6760-072-0934	2-2	MP26
5910-984-8368	2-5	C.	6760-072-0935	2-2	MP27
5920-142-7376	2-3	PS1F1	6760-072-6773	2-1	MP69
5920-615-3909	2-8	PS1XF1	6760-543-4191	2-7	MP71
5930-655-1507	2-8	PS1S2	6760-981-5046	2-2	MP65
5930-655-1508	2-8	PS1S1	6760-981-5047	2-2	MP61
5935-149-3227	2-8	PS1J2	6760-981-5048	2-2	MP47
5935-201-7968	2-5	W1P1	6760-981-5051	2-2	MP52
5935-636-7145		W6P4	6760-981-5052	2-2	MP38
5935-688-4026	2-5	W1CP1	6760-981-5053		MP41
5935-833-6021	2-8	PS1J3	6760-981-8683	2-1	MP19
5935-833-6021	2-8	PS1J4	6760-981-8684	2-2	MP55
5935-852-9611	2-8	PS1J1	6760-981-8685	2-2	MP58
5950-708-2165	2-5	T1	6760-981-8689	2-1	MP60
5950-708-2165	2-6	T3	6760-981-8691	2-2	MP35
5950-984-1697	2-8	PS1T2	6760-981-8692		MP136
6130-984-5265	2-8	PS1CR1	6760-981-8700	2-1	MP17

SECTION IV INDEX-FEDERAL STOCK NUMBER AND REFERENCE NUMBER CROSS REFERENCE
TO FIGURE AND ITEM NUMBER OR REFERENCE DESIGNATION (CONTINUED)

FEDERAL STOCK NUMBER	FIGURE NUMBER	ITEM NUMBER OR REF. DESIGNATION	FEDERAL STOCK NUMBER	FIGURE NUMBER	ITEM NUMBER OR REF. DESIGNATION
6760-883-3978		MP12	6760-883-3978		MP12
6760-983-3981		MP13	6760-983-3981		MP13
<u>REFERENCE NO.</u>	<u>FIG. CODE</u>	<u>REFERENCE DESIGNATION</u>	<u>REFERENCE NO.</u>	<u>FIG. CODE</u>	<u>REFERENCE DESIGNATION</u>
A-7231	47904	2-7 A17	FT-120	33173	2-6 T2
AE90	99176	2-8 PS1MP193	H12136	99176	MP96
AN3057-1C	88044	W3CP2	XDL	75915	2-8 PS1F1
AN3057-12	88044	W6CP3	MS15795-210	96906	MP113
AN3657-4	88044	W4CP3	MS15795-310	96906	MP101
AN3057-8	88044	2-5 W1CP1	MS16632-1037	96906	2-1 MP5
AN3057-8	88044	2-6 W2CP1	MS16633-1025	96906	MP98
AN960-0516	88044	MP119	MS171500	96906	MP83
A10529	20321	2-7 MP71	MS25100-22	96906	2-8 PS1S2
B-76189	47904	2-1 A41	MS25100-23	96906	2-8 PS1S1
BA-420/U	81349	2-3 B71	MS3102A-12S-3S	96906	2-8 PS1J2
B58N	99176	MP7	MS3102A-16-9S	96906	2-8 PS1J3
DC359	99176	MP162	MS3102A-16-9S	96906	2-8 PS1J4
DC360	99176	2-8 PS1MP170	MS3102A-18-11P	96906	2-8 PC-J1
DD190	99176	2-5 MP144	MS3106A-12S-3P	96906	W4P4
DD190	99176	2-6 MP157 4	MS3106A-16-9P	96906	2-5 W1P1
DD598	99176	2-8 PS1MP167	MS3106A-16-9P	96906	2-6 W2P2
DE1127	99176	2-8 PS1MP180	MS3106A-18-11S	96906	W3P3
DE1129	99176	2-8 PS1MP184	MS3106A-18-11S	96906	W6P5
DE1130	99176	2-5 MP141	MS35225-28	96906	2-8 PS1MP173
DE1130	99176	2-6 MP157 1	MS35225-32	96906	2-8 PS1MP174
DE1131	99176	2-5 MP142	MS35225-32	96906	2-8 PS1MP176 1
DE1131	99176	2-6 MP157 2	MS35226-70	96906	MP108
DE1132	99176	2-5 MP146	MS35333-13	96906	2-5 MP147
DE1132	99176	2-6 MP157 9	MS35233-13	96906	2-6 MP157 10
DE1133	99176	MP163	MS35233-14	96906	2-1 MP81
DE661	99176	2-5 E6	MS35233-14	96906	2-1 MP86
DE661	99176	2-6 MP157 8	MS35235-27	96906	MP90
DE778A	99176	2-5 YV1	MS35236-67	96906	MP107
DE778A	99176	2-6 XV2	MS35241-43	96906	2-8 PS1MP177
D82383	47904	2-7 A18	MS35245-1	96906	2-2 MP1
ET-120	33173	2-5 V1	MS35245-2	96906	2-2 MP40 1
			MS35245-6	96906	2-2 MP33
			MS35249-34	96906	2-2 MP127

SECTION IV INDEX-FEDERAL STOCK NUMBER AND REFERENCE NUMBER CROSS REFERENCE
TO FIGURE AND ITEM NUMBER OR REFERENCE DESIGNATION (CONTINUED)

FEDERAL STOCK NUMBER	FIGURE NUMBER		ITEM NUMBER OR REF DESIGNATION		FEDERAL STOCK NUMBER	FIGURE NUMBER		ITEM NUMBER OR REF DESIGNATION	
	FIG. NO.	CODE	FIG. NO.	REFERENCE DESIGNATION		FIG. NO.	CODE	FIG. NO.	REFERENCE DESIGNATION
MS35249-34	96906			MP156.2	R2008	99176			MP160
MS35251-90	96906			MP152	R2008	99176			PSMP168
MS35266-63	96906			MP153	R2012	99176			PSMP171
MS35267-32	96906			MP159.2	R2012	99176	2-8		PSMP186
MS35269-13	96906		2-8	PSMP169	R4012	99176			PSMP187
MS35269-43	96906		2-1	MP12	R4012	99176			PSMP188
MS35269-45	96906		2-1	MP15	TDE115B	99176	2-5		T1
MS35333-36	96906		2-5	MP148	TDE115B	99176	2-6		T3
MS35333-36	96906		2-6	MP157.11	TDE152	99176	2-8		PS172
MS35333-37	96906		2-8	PSMP175	WE74	99176	2-8		PSMP179
MS35333-37	96906		2-8	PSMP176.2	X1463B	28385			PSMP181
MS35333-37	96906		2-8	PSMP177.1	001-002	99176	2-1		MP16
MS35333-37	96906		2-8	PSMP182.2	001-003	99176	2-1		MP14
MS35335-15	96906		2-1	MP85	001-004	99176	2-1		MP124
MS35457-55	96906			MP79	001-011	99176	2-1		MP8
MS35649-25	96906		2-2	MP36	001-012	99176	2-1		MP84
MS35649-62	96906		2-8	PSMP178	001-013	99176	2-1		MP4
MS35649-62	96906		2-8	PSMP182.1	001-016	99176			MP187
MS35649-84	96906			MP100	001-018	99176			MP126
MS35650-102	96906			MP134	001-018	99176			MP156.1
MS51017-47	96906		2-1	MP13	001-018	99176			MP159.1
MS51021-21	96906		2-5	MP145	001-023	99176	2-1		MP11
MS51021-21	96906		2-6	MP157.5	001-029	99176			MP125
MS51021-22	96906		2-5	MP143	001-031	99176	2-1		MP82
MS51021-22	96906		2-6	MP157.3	001-039	99176	2-1		MP18
MS51041-40	96906		2-1	MP13.5	001-040	99176	2-1		MP10
MS91185-1	96906			W6P4	001-041	99176	2-1		MP3
NL90-75L	99176		2-5	MP149	001-056	99176	2-1		MP17
NL90-75L	99176		2-6	MP157.12	001-065	99176			MP128
RC20GF515J	81349		2-8	PSLR5	001-066	99176			MP130
RC20GF515J	81349		2-8	PSLR6	001-067	99176			MP129
RC32GF334J	81349		2-8	PSLR4	001-068	99176			MP131
RC32GF394J	81349		2-8	PSLR3	001-069	99176			MP132
RR24J5689	99176		2-8	PS1CR1	001-087	99176	2-1		MP80

SECTION IV INDEX-FEDERAL STOCK NUMBER AND REFERENCE NUMBER CROSS REFERENCE
TO FIGURE AND ITEM NUMBER OR REFERENCE DESIGNATION (CONTINUED)

FEDERAL STOCK NUMBER		FIGURE NUMBER		ITEM NUMBER OR REF. DESIGNATION		FEDERAL STOCK NUMBER		FIGURE NUMBER		ITEM NUMBER OR REF. DESIGNATION	
REFERENCE NO.	MFG CODE	FIG. NO.	REFERENCE DESIGNATION	REFERENCE NO.	MFG CODE	FIG. NO.	REFERENCE DESIGNATION	REFERENCE NO.	MFG CODE	FIG. NO.	REFERENCE DESIGNATION
001-088	99176	2-1	MP9	001-146	99176	2-3	MP161				
001-090	99176		MP74	001-147	99176	2-3	W3				
001-192	99176		MP77	001-148	99176		W3W2				
001-093	99176		MP75	001-149	99176		W3W3				
001-094	99176		MP76	001-152	99176	2-5	W1				
001-095	99176	2-	MP73	001-153	99176	2-6	W2				
001-097	99176		MP6	001-154	99176	2-5	MP153				
001-100	99176	2-2	MP30	001-154	99176	2-6	MP157 19				
001-101	99176		MP89	001-156	99176	2-3	MP25				
001-103	99176		MP120	001-158	99176		PS1MP166				
001-105	99176		MP88	001-160	99176	2-8	PS1MP185				
001-106	99176		MP91	001-161	99176	2-8	PS1MP177				
001-111	99176		MP121	001-162	99176	2-8	PS1MP176				
001-112	99176		MP116	001-164	99176		MP70				
001-	99176		MP104	001-180	99176		MP111				
001-115	99176	2-4	MP87	001-183	99176		MP114				
001-117	99176		MP115	001-184	99176		MP110				
001-119	99176		MP156	001-186	99176		MP103				
001-120	99176		MP159	001-187	99176		MP112				
001-124	99176	2-5	MP155	001-190	99176		MP106				
001-125	99176	2-6	MP158	001-192	99176		MP117				
001-128	99176	2-1	MP78	001-193	99176		MP118				
001-131	99176		W4W5	001-199	99176	2-2	MP22				
001-134	99176		PS1MP168	001-199	99176	2-2	MP27 1				
001-135	99176		MP164	001-199	99176	2-2	MP31				
001-137	99176		W4	001-300	99176	2-1	MP19				
001-138	99176		W6	001-301	99176	2-2	MP20				
001-139	99176		W6W7	001-302	99176	2-2	MP21				
001-140	99176		MP135	001-303	99176	2-2	MP23				
001-141	99176		MP136	001-304	99176	2-2	MP25				
001-142	99176		MP137	001-305	99176		MP24				
001-143	99176		MP138	001-306	99176	2-2	MP26				
001-144	99176		MP139	001-307	99176	2-2	MP29				

SECTION IV INDEX-FEDERAL STOCK NUMBER AND REFERENCE NUMBER CROSS REFERENCE

TO FIGURE AND ITEM NUMBER OR REFERENCE DESIGNATION (CONTINUED)

FEDERAL STOCK NUMBER		FIGURE NUMBER		ITEM NUMBER OR REF DESIGNATION		FEDERAL STOCK NUMBER		FIGURE NUMBER		ITEM NUMBER OR REF DESIGNATION	
REFERENCE NO.	MFG. CODE	FIG. NO.	REFERENCE DESIGNATION	REFERENCE NO.	MFG. CODE	FIG. NO.	REFERENCE DESIGNATION	REFERENCE NO.	MFG. CODE	FIG. NO.	REFERENCE DESIGNATION
001-308	99176	2-2	MP40	001-338	99176	2-2	MP43				
001-309	99176	2-2	MP27	001-339	99176	2-2	E5				
001-310	99176	2-2	MP28	001-340	99176	2-2	E3				
001-311	99176	2-2	MP68	001-350	99176		MP92				
001-312	99176	2-2	MP67	001-351	99176		MP95				
001-313	99176	2-2	MP63	001-352	99176		MP94				
001-314	99176	2-2	MP29	001-354	99176		MP93				
001-315	99176	2-2	MP66	001-356	99176		MP99				
001-316	99176	2-2	E1	001-358	99176		MP97				
001-317	99176	2-2	P1	001-359	99176		MP91 5				
001-318	99176	2-2	P2	001-360	99176	2-2	MP35				
001-319	99176	2-2	MP51	001-361	99176	2-2	MP38				
001-320	99176	2-2	MP49	001-362	99176		MP41				
001-321	99176	2-2	MP42	001-363	99176	2-2	MP44				
001-322	99176		MP37	001-364	99176	2-2	MP47				
001-322	99176	2-2	MP41 1	001-365	99176	2-2	MP50				
001-322	99176	2-2	MP50 1	001-366	99176	2-2	MP52				
001-322	99176	2-2	MP52 1	001-367	99176	2-2	MP55				
001-323	99176	2-2	MP46	001-368	99176	2-2	MP58				
001-324	99176	2-2	MP45	001-369	99176	2-2	MP61				
001-325	99176	2-2	E2	001-370	99176	2-2	MP65				
001-326	99176	2-2	MP53	001-375	99176		MP106 1				
001-327	99176	2-2	E4	001-376	99176		MP107 1				
001-328	99176	2-2	MP54	1050B96	91802	2-8	PS1DS1				
001-329	99176	2-2	MP48	10588	99176		MP150				
001-330	99176	2-2	MP56	10588	99176		MP157 13				
001-331	99176	2-2	MP32	10589	99176		MP151				
001-332	99176		MP67	10589	99176		MP157 14				
001-333	99176	2-2	MP57	146P10492	56289	2-8	PS1C3				
001-334	99176	2-2	MP59	146P27492	56289	2-5	C1				
001-335	99176	2-2	MP60	146P27492	56289	2-6	C2				
001-336	99176	2-2	MP34	22K1-1032	99176		MP102				
001-337	99176	2-1	MP69	22K1-1032	99176		MP109				

SECTION IV INDEX-FEDERAL STOCK NUMBER AND REFERENCE NUMBER CROSS REFERENCE
TO FIGURE AND ITEM NUMBER OR REFERENCE DESIGNATION (CONTINUED)

FEDERAL STOCK NUMBER	FIGURE NUMBER	ITEM NUMBER OR REF DESIGNATION	FEDERAL STOCK NUMBER	FIGURE NUMBER	ITEM NUMBER OR REF. DESIGNATION
<u>REFERENCE NO.</u>	<u>FIG. CODE</u>	<u>FIG. NO.</u> <u>REFERENCE DESIGNATION</u>			
2201-20	99176	MP105			
23 C	99176	2-5 MP154			
2 3 C	99176	2-6 MP157.20			
212E2025	56289	2-2 PS1R1			
212E2025	56289	2-2 PS1R2			
341012	75915	1-8 PSLXF1			
37C19A	56289	2-2 PS1C1			
37C19A	56289	PS1C2			
4-2	99176	2-2 PSLMP182			
433212	99176	2-1 MP72			
o	63415	2-5 MP152			
o	63215	2-6 MP157 15			
9706: 3	99176	#3P2			

SECTION V INDEX-REFERENCE DESIGNATION
CROSS REFERENCE TO PAGE NUMBER

REFERENCE DESIGNATION	PAGE NUMBER	REFERENCE DESIGNATION	PAGE NUMBER	REFERENCE DESIGNATION	PAGE NUMBER
A17	2-11	MP22	2-1	MP51	2-3
A18	2-11	MP23	2-1	MP52	2-3
A41	2-11	MP24	2-2	MP52.1	2-3
BT1	2-5	MP25	2-2	MP53	2-3
C1	2-7	MP26	2-2	MP54	2-3
C2	2-5	MP27	2-2	MP55	2-3
E1	2-2	MP27.1	2-2	MP56	2-3
E2	2-2	MP28	2-2	MP57	2-3
E3	2-2	MP29	2-2	MP58	2-3
E4	2-2	MP30	2-2	MP59	2-3
E5	2-2	MP31	2-2	MP60	2-3
E6	2-7	MP32	2-2	MP61	2-3
MP2.5	2-1	MP33	2-2	MP62	2-3
MP3	2-1	MP34	2-2	MP63	2-3
MP4	2-1	MP35	2-2	MP64	2-3
MP5	2-1	MP36	2-2	MP65	2-3
MP6	2-1	MP37	2-2	MP66	2-4
MP7	2-1	MP38	2-2	MP67	2-4
MP8	2-1	MP39	2-2	MP68	2-4
MP9	2-1	MP40	2-2	MP69	2-4
MP10	2-1	MP40.1	2-2	MP70	3-1
MP11	2-1	MP41	2-2	MP71	2-4
MP12	2-1	MP41.1	2-3	MP72	2-4
MP13	2-1	MP42	2-3	MP73	2-4
MP13.5	2-1	MP43	2-3	MP74	2-4
MP14	2-1	MP44	2-3	MP75	2-4
MP15	2-1	MP45	2-3	MP76	2-4
MP16	2-1	MP46	2-3	MP77	2-4
MP17	2-1	MP47	2-3	MP78	2-4
MP18	2-1	MP48	2-3	MP79	2-4
MP19	2-1	MP49	2-3	MP80	2-4
MP20	2-1	MP50	2-3	MP81	2-4
MP21	2-1	MP50.1	2-3	MP82	2-4

SECTION V INDEX-REFERENCE DESIGNATION
CROSS REFERENCE TO PAGE NUMBER (CONTINUED)

REFERENCE DESIGNATION	PAGE NUMBER	REFERENCE DESIGNATION	PAGE NUMBER	REFERENCE DESIGNATION	PAGE NUMBER
MP83	2-4	MP111	2-5	MP142	2-6
MP84	2-4	MP112	2-5	MP143	2-7
MP85	2-4	MP113	2-5	MP144	2-7
MP86	2-4	MP114	2-5	MP145	2-7
MP87	2-4	MP115	2-5	MP146	2-7
MP88	2-4	MP116	2-5	MP147	2-7
MP89	2-4	MP117	2-6	MP148	2-7
MP90	2-4	MP118	2-6	MP149	2-7
MP91	2-4	MP119	2-6	MP150	2-7
MP91.5	2-4	MP120	2-6	MP151	2-7
MP92	2-5	MP121	2-6	MP152	2-7
MP93	2-5	MP122	2-6	MP153	2-7
MP94	2-5	MP124	2-6	MP154	2-7
MP95	2-5	MP125	2-6	MP155	2-7
MP96	2-5	MP126	2-6	MP156	2-7
MP97	2-5	MP127	2-6	MP156.1	2-7
MP98	2-5	MP128	2-6	MP156.2	2-7
MP99	2-5	MP129	2-6	MP157	2-7
MP100	2-5	MP130	2-6	MP157.1	2-7
MP101	2-5	MP131	2-6	MP157.2	2-7
MP102	2-5	MP132	2-6	MP157.3	2-7
MP103	2-5	MP133	2-6	MP157.4	2-8
MP104	2-5	MP134	2-6	MP157.5	2-8
MP105	2-5	MP135	2-6	MP157.8	2-8
MP106	2-5	MP136	2-6	MP157.9	2-8
MP106.1	2-5	MP137	2-6	MP157.10	2-8
MP107	2-5	MP138	2-6	MP157.11	2-8
MP107.1	2-5	MP139	2-6	MP157.12	2-8
MP108	2-5	MP140	2-6	MP157.13	2-8
MP109	2-5	MP141	2-6	MP157.14	2-8
MP110	2-5			MP157.15	2-8

**SECTION V INDEX-REFERENCE DESIGNATION
CROSS REFERENCE TO PAGE NUMBER (CONTINUED)**

REFERENCE DESIGNATION	PAGE NUMBER	REFERENCE DESIGNATION	PAGE NUMBER	REFERENCE DESIGNATION	PAGE NUMBER
MP157.19	2-8	PS1MP172	2-9	T 3	2-8
MP157.20	2-8	PS1MP173	2-9	T 1	2-7
MP158	2-8	PS1MP174	2-9	T2	2-8
MP159	2-8	PS1MP175	2-9	W1	2-7
MP159 1	2-8	PS1MP176	2-10	W1CP1	2-7
MP159.2	2-8	PS1MP176.1	2-10	W1P1	2-7
MP160	2-8	PS1MP176.2	2-10	W2	2-8
MP161	2-8	PS1MP177	2-10	W2CP1	2-8
MP162	2-8	PS1MP177.1	2-10	W2 2	2-8
MP163	2-9	PS1MP178	2-10	W3	2-9
MP164	2-9	PS1MP179	2-10	W3CP2	2-9
MP165	2-9	PS1MP180	2-10	W3P2	2-9
MP167	2-11	PS1MP181	2-10	W3P3	2-9
P1	2-2	PS1MP182	2-10	W3W2	2-9
P2	2-2	PS1MP182 1	2-10	W3W3	2-9
PS1	2-9	PS1MP182.2	2-10	W4	2-11
PS101	2-10	PS1MP183	2-11	W4CP3	2-11
PS102	2-10	PS1MP184	2-11	W4P4	2-11
PS103	2-10	PS1MP185	2-11	W4W5	2-11
PS10R1	2-10	PS1MP186	2-11	W 6	2-11
PS1DS1	2-11	PS1MP187	2-11	W6CP3	2-11
PS1F1	2-9	PS1MP188	2-11	W6P4	2-11
PS1J1	2-9	PS1R1	2-10	W6P5	2-11
PS1J2	2-11	PS1R2	2-10	W6W7	2-11
PS1J3	2-10	PS1R3	2-10	XV1	2-7
PS1J4	2-10	PS1R4	2-10	XV2	2-8
PS1MP166	2-9	PS1R5	2-10		
PS1MP167	2-9	PS1R6	2-10		
PS1MP168	2-9	PS1S1	2-9		
PS1MP168 1	2-9	PS1S2	2-11		
PS1MP169	2 9	PS1T2	2-9		
PS1MP170	2-9	PS1XF1	2-9		
PS1MP171	2-9	T1	2-7		

By Order of the Secretary of the Army:

BRUCE PALMER, JR.
General, U.S. Army
Acting Chief of Staff

Official:

VERNE L. BOWERS
Major General, United States Army
The Adjutant General

Distribution:

Active Army.

USASA (2)
CNCB (1)
ACSC-E (2)
Dir of Trans (1)
COE (1)
TSG (1)
DCSLOG (1)
USAARENBD (2)
USAMB (10)
USACDC (2)
USACDC Agey (1)
AMC (1)
CONARC (5)
ARADCOM (2)
ARADCOM Rgn (2)
OS Maj Comd (4)
LOGCOMDS (5)
MICOM (4)
TECOM (2)
USASTRATCOM (4)
USA ECS (70)
MDW (1)
Armies (2)
Corps (2)
1st Cav Div (3)
Svc Colleges (2)
USASESS (5)
USAADS (2)
USAFAS (2)
USAARM (2)
USAIS (2)
USAES (2)
USAINTS (3)
WRAMC (1)

USACDCEC (10)
Instl (2) except
Fort Gordon (10)
Fort Huachuca (10)
Fort Carson (15)
Ft Richardson (ECOM Cfc) (2)
WSMR (3)
Army Dep (2) except
LBAD (14)
SAAD (30)
TOAD (14)
LEAD (7)
NAAD (5)
SVAD (5)
ATAD (10)
USA Dep (2)
Sig Sec USA Dep (5)
Sig Dep (10)
Sig FLDMS (2)
ATS (1)
USAERDAA (2)
USAERDAW (5)
USACRREL (2)
MAAG (1)
USARMIS (1)
USAPA (5)
Units org under fol TOE:
(1 copy each unit)
11-95
11-96
11-117
11-500(AA-AC)
29-134
29-136

NG: None.

USAR: None.

For explanation of abbreviations used, see AR 310-50.

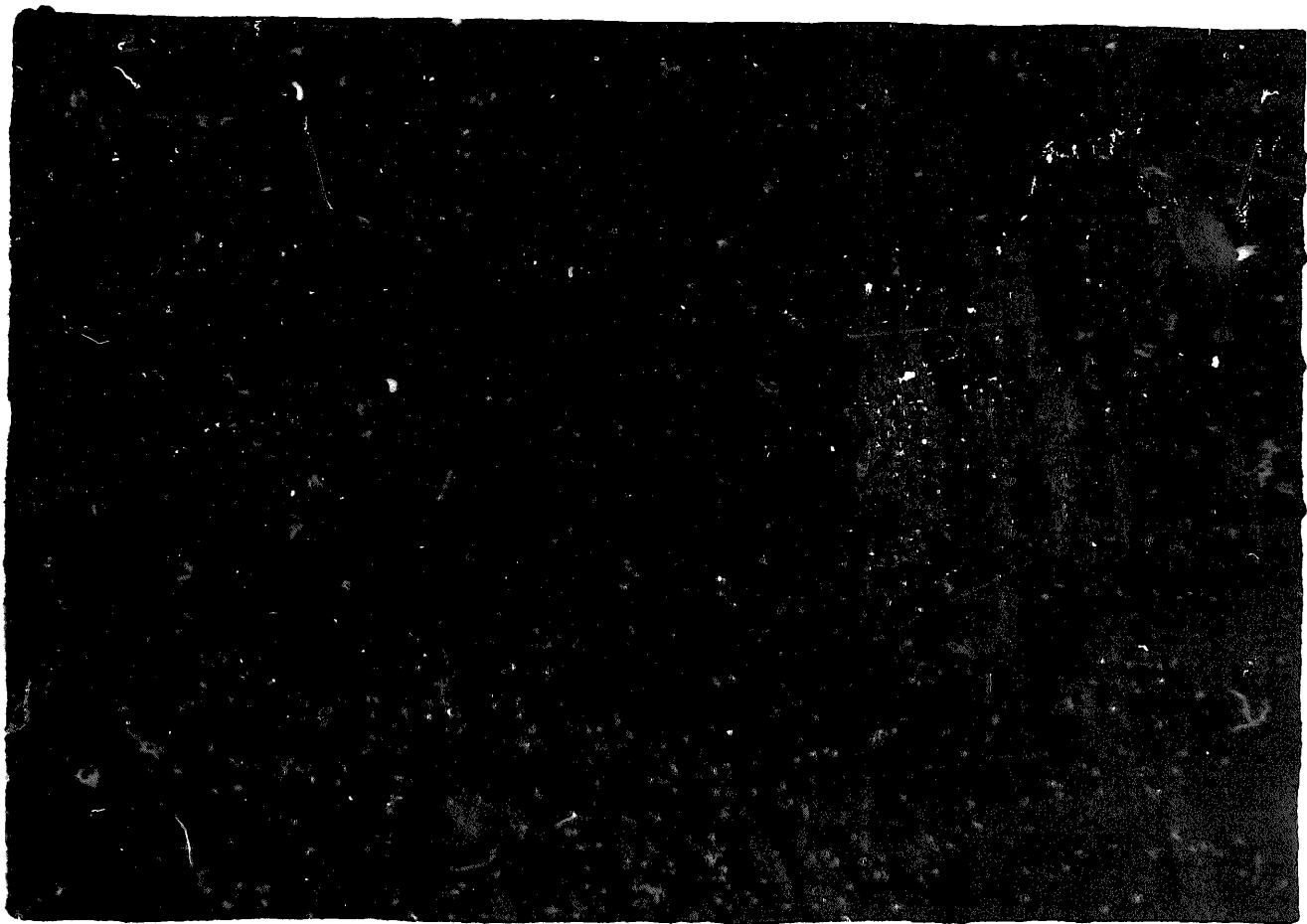
IM 11-0120-210-337 CAMERA SET, STILL PICTURE NO-19A5-1972

END

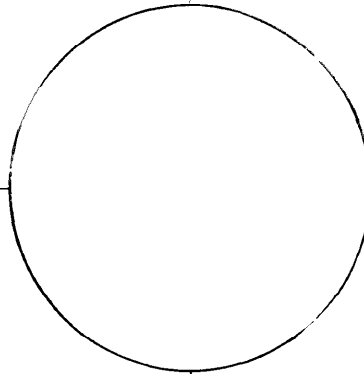
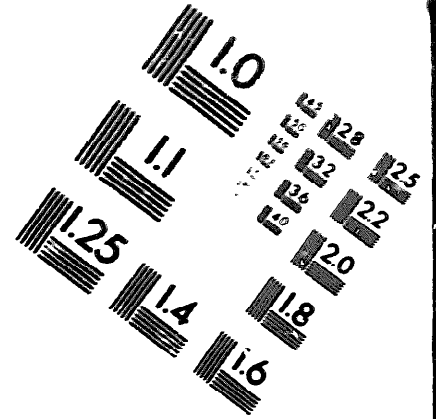
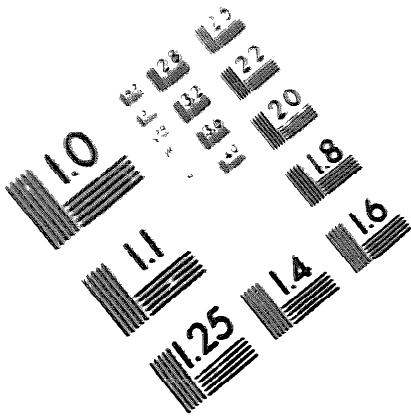
01-07-83

DATE





DEPARTMENT OF THE ARMY
MICROFORM
TEST TARGET



150 MM

10 mm (e= 81 mm)

ABCDEFGHIJKLMN OPQRSTUVWXYZ 1234567890
abcdefghijklmnopqrstuvwxyz \$%& /%# 1/2 1/4 3/4 — = + x & @ *

15 mm (e= 109 mm)

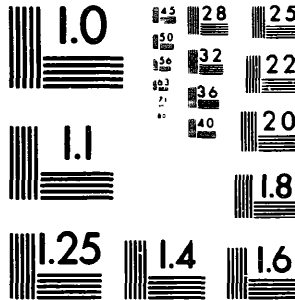
ABCDEFGHIJKLMN OPQRSTUVWXYZ 1234567890
abcdefghijklmnopqrstuvwxyz \$%& /%# 1/2 1/4 3/4 — = + x & @ *

20 mm (e= 137 mm)

ABCDEFGHIJKLMN OPQRSTUVWXYZ
abcdefghijklmnopqrstuvwxyz
1234567890 \$%& /%# 1/2 1/4 3/4 — = + x & @ *

2.5 mm (e= 177 mm)

ABCDEFGHIJKLMN OPQRSTUVWXYZ
abcdefghijklmnopqrstuvwxyz
1234567890 \$%& /%# 1/2 1/4 3/4 — = + x & @ *



10 mm (e= 81 mm)

ABCDEFGHIJKLMN OPQRSTUVWXYZ 1234567890
abcdefghijklmnopqrstuvwxyz \$%& /%# 1/2 1/4 3/4 — = + x & @ *

15 mm (e= 109 mm)

ABCDEFGHIJKLMN OPQRSTUVWXYZ 1234567890
abcdefghijklmnopqrstuvwxyz \$%& /%# 1/2 1/4 3/4 — = + x & @ *

20 mm (e= 137 mm)

ABCDEFGHIJKLMN OPQRSTUVWXYZ
abcdefghijklmnopqrstuvwxyz
1234567890 \$%& /%# 1/2 1/4 3/4 — = + x & @ *

2.5 mm (e= 177 mm)

ABCDEFGHIJKLMN OPQRSTUVWXYZ
abcdefghijklmnopqrstuvwxyz
1234567890 \$%& /%# 1/2 1/4 3/4 — = + x & @ *



200 MM

250 MM

